



Medical Art Prosthetics, LLC®

MAIN OFFICE: 7818 Big Sky Drive, Suite 111 • Madison, Wisconsin 53719

MedicalArtProsthetics.com • 608-833-7002

CHATTANOOGA • CHICAGO • LOS ANGELES • MADISON • NEW JERSEY • ROCHESTER • SAN JOSE

Medical Art Prosthetics is a national team of clinical anaplastologists, ophthalmologists, and prosthetists with offices across the United States. Our goal is to enable our patients to renew their appearance and function to lead active, rewarding lives.

The MAP Network helps renew the natural you with Orbital (Eye) Prosthetics

The approach of Medical Art Prosthetics toward the creation of an orbital prosthesis involves medical, artistic and prosthetic components – none being more or less important than the others. Trained in basic medical sciences we understand involved anatomy to communicate with surgeons. Skilled in art we call upon natural talent to render color and form in ways that no technology can. Experienced in prosthetics, specifically facial prosthetics, we have designed, fabricated and fit more truly aesthetic orbital prostheses than any provider in the United States.

When Quality Matters

Our design sessions are comfortable for the patient and productive for the facial anaplastologist because our specialized environment is quiet, relaxed and conducive to the unique creative technical process. Some visit us from the other side of the world for the results we offer. We can create for you a life-like, natural-looking new orbital (eye) prosthesis.

Longevity of our Prostheses

Orbital prostheses should be almost indistinguishable from the orbital area on the unaffected side. Since the eye changes with changing expressions, the orbital prosthesis will never be perfectly symmetrical 100% of the time. However, it should be balanced, possessing a neutral or averaged expressiveness and highly nuanced with individualized skin characteristics, eyelash/brow treatment, even simulation of skin fluids.

Generally, silicone orbital and other facial prostheses are expected to last several years before needing replacement. Design and materials play a large role in how long a prosthesis will last, but we always make an effort to follow our clients and be accessible for follow-up care. Longevity of our hollow bulb prosthesis was evidenced by our loyal patient's return 10 years after receiving her first prosthesis. Our technique is published in prosthetic and surgical texts.

Glasses Retained Orbital Prosthesis

When patients have very delicate skin or adhesive sensitivities or prefer the simplest way to wear their prosthesis without surgery we simply attach the orbital prosthesis to attractive eyeglasses. Experience again helps us know the best materials to use, the styles of glasses that



GLASSES RETAINED ORBITAL PROSTHESIS

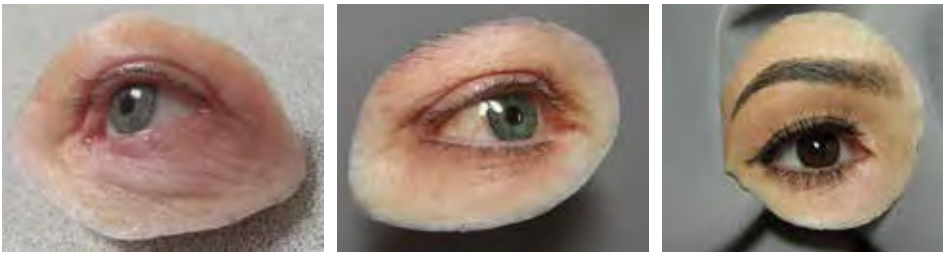
work the best, and the cleverest molding techniques to maximize aesthetics, camouflage and durability of the system. It's an old-school method, but when done well it's perhaps the most elegant and liberating of all.

Adhesive-Retained

Application of prosthetic adhesives remains the conventional method and a very reliable and secure means of attaching orbital prostheses.



Bone-Anchored "osseointegrated" prostheses provide secure predictable attachment for many of our patients (left). If Vistafix implant surgery is contraindicated, an ultra-lightweight anatomically-retained prosthesis (right) might be an option; a user-friendly design our patients love.



We employ the best adhesives and placement strategies based on 35 years of experience specifically in this specialty. The nuanced methods, tricks and techniques we have developed working closely with hundreds of orbital patients are all brought to bare making adhesive daily use ever-easier for each new patient. Mastery of adhesive management is empowering and we see it all the time.

Extraoral Maxillofacial Prosthesis

The larger orbital prosthesis is sometimes classified as an upper facial prosthesis or hemifacial prosthesis. Orbital exenteration with hemimaxillectomy is a very ablative surgery that necessitates a larger facial prosthesis.

However, the prosthesis is designed very light in weight with a magnetic connector so that it may attach to the intraoral dental device called the obturator.

Our design allows easy placement of the orbital prosthesis. Both the intraoral and extraoral components snap together with specialty titanium encased corrosion-proof magnets we have identified for this purpose. The two prosthetic components thereby stabilize each other. Taking this intensive approach we turn the devastating effect of the surgical deficit into an advantage for the patient.

Orbital Prosthesis Technology

Some of our orbital prostheses have been developed using our digital scanning and 3D printing technology. We emphasize though that the technology is only a tool and that the real challenge of instilling the beautiful detail that makes our prostheses come to life relies on our talents and temperament as medical artists.

About Medical Art Prosthetics

Medical Art Prosthetics, LLC was founded in 1985 by Greg Gion, a highly trained and experienced anaplastologist. What started out as a small facial prosthetics office based in Texas then Wisconsin has grown over the last 15 years into a national team of medical artists.

Today the Medical Art Prosthetics team boasts a nationally prominent network dedicated to craniofacial, ocular, somatic and extremity prosthetics that restore anatomy with uncompromising life-like realism. The medical artists have earned a reputation that attracts patients worldwide.

FOR MORE INFORMATION:

info@medicalartprosthetics.com

PHONE: 877-242-7951

7818 Big Sky Drive, Suite 111

Madison, WI 53719

PRACTITIONERS AT THE MEDICAL ART PROSTHETICS NETWORK



Gregory Gion
MMS, CCA, BOCP
Medical Artist
Anaplastologist



McKenzie Bergenback
MS
Medical Artist
Anaplastologist



Shay Kilby
MS
Medical Artist
Anaplastologist



Todd Kubon
MAMS, CCA
Medical Artist
Anaplastologist



Julie Schomberg
MSOP
Artist
Anaplastologist



Maddie Singer
BA, BFA
Artist
Anaplastologist



Medical Art Prosthetics, LLC®

MAIN OFFICE: 7818 Big Sky Drive, Suite 111
Madison, Wisconsin 53719

MedicalArtProsthetics.com • 608-833-7002

CHATTANOOGA • CHICAGO • LOS ANGELES
MADISON • NEW JERSEY • ROCHESTER • SAN JOSE